

DYNAPAC LIGHT EQUIPMENT

Dynapac Rammers
Dynapac Forward Plates
Dynapac Reversible Plates
Dynapac Twin Drum Roller
Dynapac Utility Roller



DYNAPAC LIGHT - a fantastic range of light compaction equipment that is Designed to Perform.

Built to Last! Combined with Dynapac's decades of experience in the world of compaction, this incredible range of equipment will ensure that you stay ahead of the game!

Dynapac offers a range of rammers, forward and reversible vibratory plates, walk behind double drum roller and utility roller, ideal for use in confined spaces. The Dynapac Light range compliments our larger compaction equipment to get the job done where access is limited. We focus on every possible type of material to compact, through weight classes and different types of machines. Find out more about the equipment that will meet your light compaction needs.

Dynapac Light Compaction

RAMMERS



DR6X

DR7

DR7X

Basic weight, kg / lbs

57 / 126

66 / 146

67 / 148

Width of shoe, mm / in

230 / 9

280 / 11

280 / 11

Fuel

Gasoline

Gasoline

Gasoline

PLATES



DFP6

DFP7AX

DFP9

64 / 141

74 / 163

90 / 198

Width of plate, mm / in

350 / 14

500 / 20

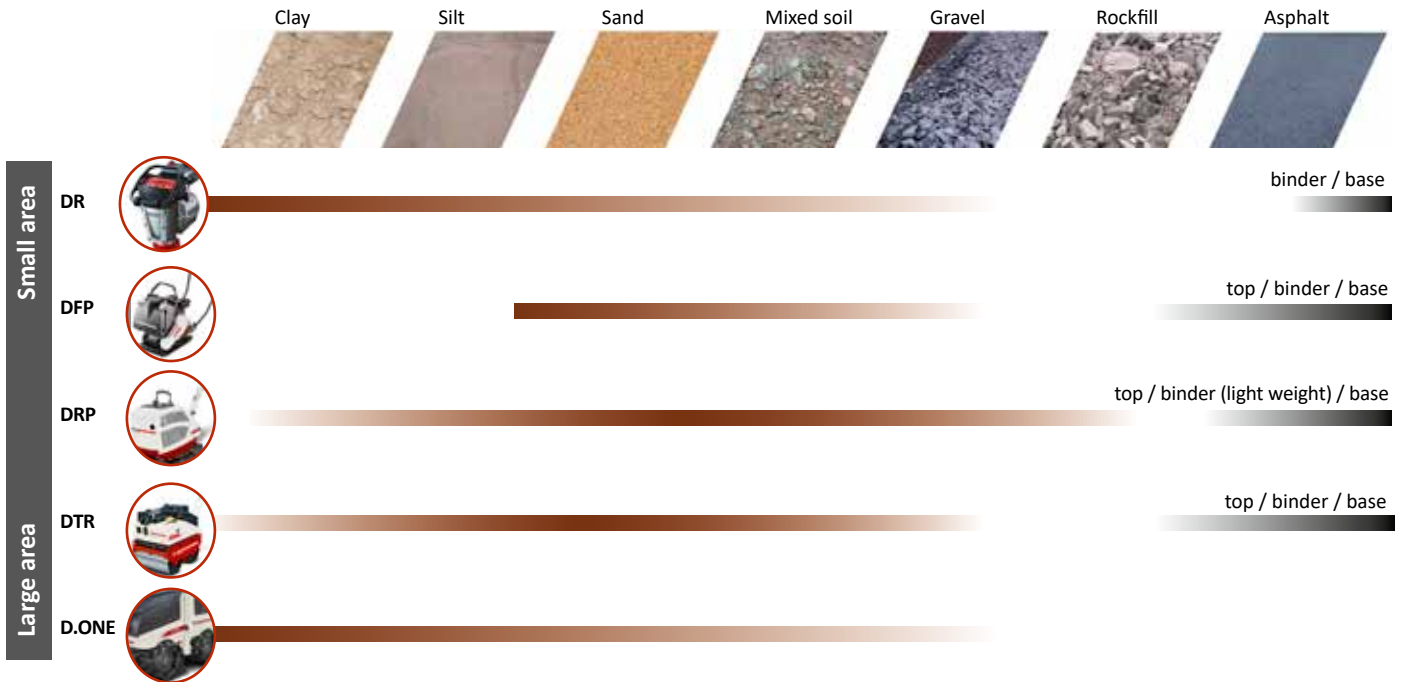
450 / 18

Gasoline

Gasoline

Gasoline

APPLICATION OVERVIEW



ROLLERS



DFP11

107 / 236

500 / 20

Gasoline



DRP25D

257 / 567

600 / 24

Diesel



DTR75

727 / 1.603

650 / 30

Diesel



D.ONE

1585 / 3494

810 / 34

Diesel

Width of drum, mm / in

PACKS A PUNCH

From high-precision manoeuvring to the roughest conditions, the four stroke low emission rammers from Dynapac lets you handle them all with ease.



DR6X



DR7



DR7X

DURABLE

Reliable & powerful 4-stroke engine from Honda safe-guarded by automatic oil level check and engine covers.

Multi-stage fuel and air filtration system to tackle the roughest conditions.

Lubrication system ensures adequate oil supply in crankcase.

COMFORTABLE

One knob for engine and fuel start/ stop.

Vibration dampened handle bars let you manage tight, tricky and precise maneuvers with ease.

Rollers on the handle, transport wheels, lifting point - move easy!

PRACTICAL

Plan ahead and stay on track with the display that shows hours to service, hours worked per day and total hours.

Engine speed indication and low speed warning that helps you get the best out of your product.

Foot and shoe extensions keeps your options open.



DR6X & DR7X

THE X-FACTOR

X-tra punch
Honda GXR120

X-tra feature
Hour & tachometer

X-tra clean
Air Pre-Filter

Engine
Honda GX100

Optional feature
Hour & tachometer

One
Air filter



DR7

DR6X			DR7		DR7X	
Operating mass	58 kg	128 lb	67 kg	148 lb	68 kg	150 lb
Basic mass	57 kg	126 lb	66 kg	146 lb	67 kg	148 lb
Shoe width	230 mm	9 in	280 mm	11 in	280 mm	11 in
Max. working speed	20 m/min	65.6 ft/min	20 m/min	65.6 ft/min	20 m/min	65.6 ft/min
Impact force	15,0 kN	3,372 lb	16,0 kN	3,597 lb	17,0 kN	3,822 lb
Vibration frequency	10 - 11,8 Hz	600 - 708 vpm	10 - 11,8 Hz	600 - 708 vpm	10 - 11,8 Hz	600 - 708 vpm
Manufacturer, model	Honda GXR120	Honda GXR120	Honda GX100	Honda GX100	Honda GXR120	Honda GXR120
Emission stage	CARB Phase III	CARB Phase III	CARB Phase III	CARB Phase III	CARB Phase III	CARB Phase III
Type	air cooled gasoline	air cooled gas	air cooled gas	air cooled gas	air cooled gas	air cooled gas
Power	2,8 kW	3.8 hp	2,3 kW	3.1 hp	2,8 kW	3.8 hp

IN A TIGHT SPOT OR NOT...

Looking for a solution for compacting in confined areas? Look no further than the streamlined Dynapac DFP's.

The asphalt maestro DFP7AX, with a special plate allows swift moves while ensuring a super finish.



DFP6



DFP7AX



DFP9



DFP11

CONVENIENT

Low vibration comfort handles with Hand Arm Vibration (HAV) values that permit long working hours.

Quick add-on water sprinkler system with quantity regulation and level indicator.

Foldable steering handle to reduce the space consumed during storage.

Wheels and lifting handles for easy point-to-point transfer.

SOLID

High quality base plate with excellent wear resistance.

Fully-encased belt drive to maximize the life time.

Frame to protect the engine against rough handling.

CUSTOMIZED

Want to pave stones or blocks? Go for the quick mount plastic mat.

Not sure if you want the water sprinkler system? You can always add-it later on.

Rear or center mounted handle – the choice is yours!



The Asphalt Maestro

*Swift moves without leaving marks
Special base-plate design with tapered edges*

*Get the right finish at ease
Optimized weight, frequency and amplitude setting*

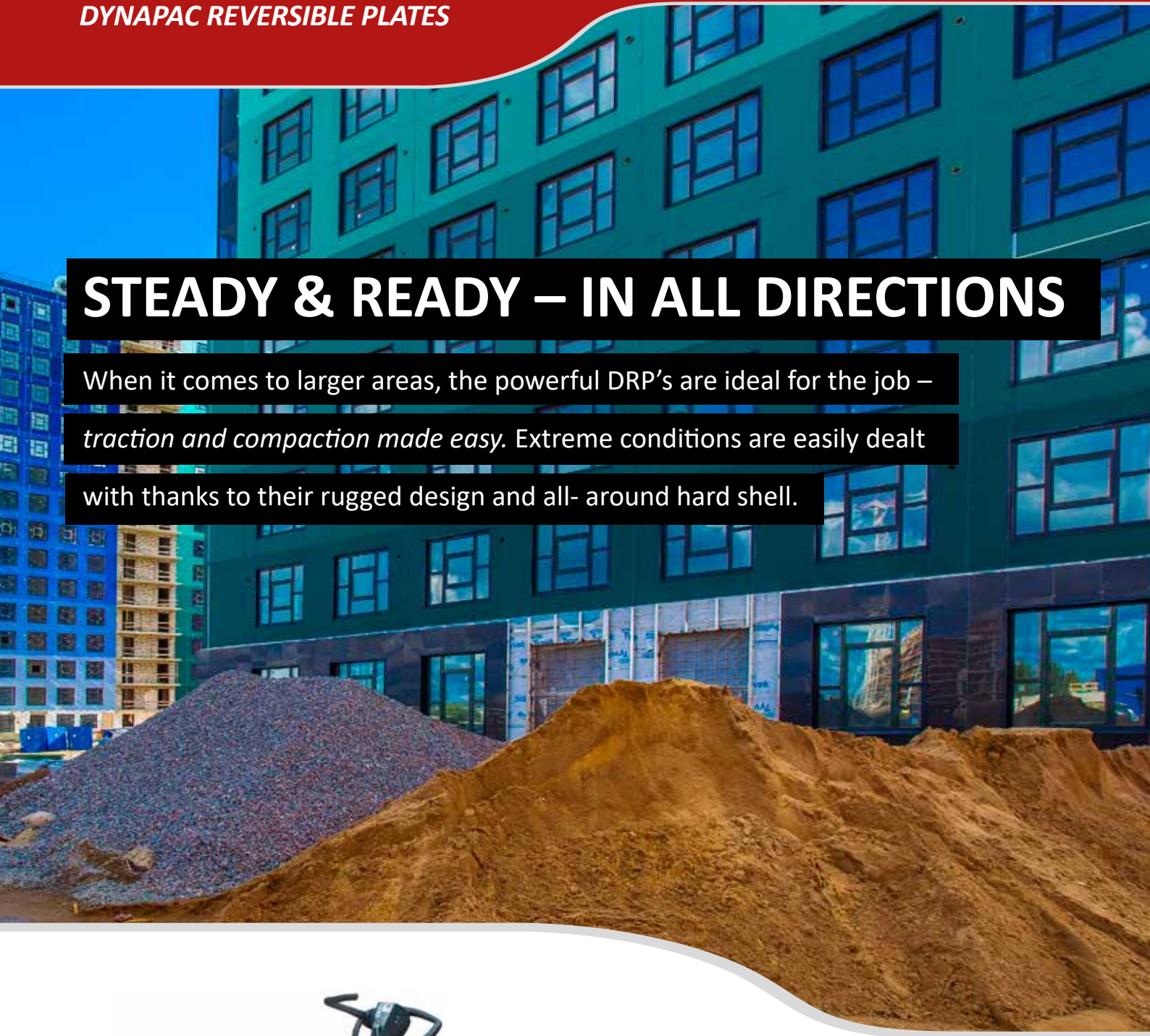
*Don't let them stick
Quick mount water sprinkler system with level indicator*



DFP6			DFP7AX		DFP9		DFP11	
Operating mass	65 kg	143 lb	82 kg	181 lb	91 kg	201 lb	108 kg	238 lb
Basic mass	64 kg	141 lb	74 kg	163 lb	90 kg	198 lb	107 kg	236 lb
Plate width	350 mm	36 in	500 mm	20 in	450 mm	18 in	500 mm	20 in
Max. working speed	25 m/min	82 ft/min	30 m/min	98 ft/min	25 m/min	82 ft/min	30 m/min	98 ft/min
Centrifugal force	10 kN	2,248 lb	12 kN	2,698 lb	18 kN	4,047 lb	25 kN	5,620 lb
Frequency	90 Hz	5,400 vpm	100 Hz	6,000 vpm	90 Hz	5,400 vpm	92 Hz	5,520 vpm
Amplitude	1,01 mm	0.040 in	1,02 mm	0.040 in	1,24 mm	0.049 in	1,11 mm	0.044 in
Manufacturer, model	Honda GX120	Honda GX120	Honda GX120	Honda GX120	Honda GX160	Honda GX160	Honda GX160	Honda GX160
Emission stage	CARB Phase III	CARB Phase III	CARB Phase III	CARB Phase III	CARB Phase III	CARB Phase III	CARB Phase III	CARB Phase III
Type	air cooled gas	air cooled gas	air cooled gas	air cooled gas	air cooled gas	air cooled gas	air cooled gas	air cooled gas
Power	2,6 kW	3.5 hp	2,6 kW	3.5 hp	3,6 kW	4.8 hp	3,6 kW	4.8 hp

STEADY & READY – IN ALL DIRECTIONS

When it comes to larger areas, the powerful DRP's are ideal for the job – *traction and compaction made easy*. Extreme conditions are easily dealt with thanks to their rugged design and all- around hard shell.



DRP25D

DRP25D		
Operating mass	260 kg	573 lb
Basic mass	257 kg	567 lb
Plate width	600 mm	24 in
Max. working speed	27 m/min	89 ft/min
Centrifugal force, front / rear	40 kN	8,992 lb
Vibration frequency	80 Hz	4,800 vpm
Amplitude, front / rear	1,4 mm	0.055 in
Manufacturer, model	Hatz, 1B 20	Hatz, 1B 20
Emission stage	non EPA	non EPA
Type	air cooled diesel	air cooled diesel
Power	3,1 kW	4.2 hp

DURABLE

Prepared for extreme conditions with the all-around hard shell. Easy-open flaps provides quick access to daily maintenance points.

High quality base plate with excellent wear resistance.

One-point lifting hook is built to withstand extreme handling.

ERGONOMIC

Electric start.

Vibration-dampened handle with one lever – precision made easy.

Steering handle can be adjusted in height and secured for work & transport.

CONVENIENT

Quick mount transport wheels.

Quick add-on plastic mats to pave stones or blocks.

Stay on track with the operating hour meter.

All-around hard shell opens wide in minutes providing excellent access for easy service.



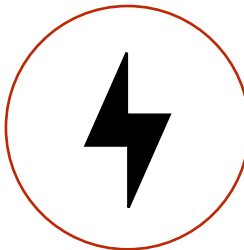
One lever - smooth handling



Hard shell



Hour meter



Electric start



Easy open flaps



Add-on plastic mat

TRIED AND TESTED

The Dynapac twin drum roller with infinitely variable speed control is exactly what you need for the perfect finish on soils and asphalt.



DTR75

Operating mass	757 kg	1,669 lb
Basic mass	727 kg	1,603 lb
Axle load, avg.	379 kg	834 lb
Drum width	650 mm	25.6 in
Speed 1, forward / reverse	0 - 5,5 km/h	0 - 3.4 mph
Speed 2, forward / reverse	0 - 2,5 km/h	0 - 1.6 mph
Centrifugal force, front / rear	22 kN	4,946 lb
Vibration frequency	55 Hz	3,300 vpm
Amplitude, front / rear	0,45 mm	0.018 in
Manufacturer, model	Hatz, 1D 42	Hatz, 1D 42
Emission stage	non EPA	non EPA
Type	air cooled diesel	air cooled diesel
Power	6,2 kW	8.3 hp

PRODUCTIVITY

Designed for asphalt and soil compaction with all main controls such as speed and vibration at the handle for easy reach.

Mechanical drive of both the drums gives you a powerful equipment with excellent gradability.

Large water tank facilitates uninterrupted operation for relatively longer period.

SAFETY AND COMFORT

Vibration-dampened handle with anti-crush mechanism & parking brake keeps the operator safe at all times.

Start the machine using the electric start mechanism.

Smooth and quiet vibration technology lets you work long hours with comfort and ease.

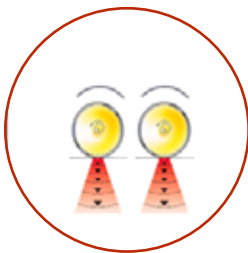
Vibration and throttle regulation on the steering rod for easy and fast operation.

FINISH

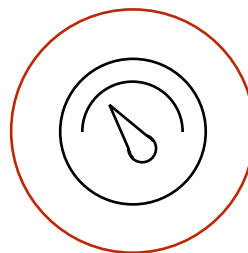
Exciter on both drums.

Even at high travel speeds, the hydrostatic drive lets you control the speed smoothly.

Infinitely variable speed controls give excellent surface finish.



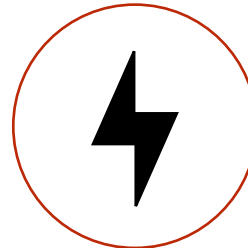
Exciter on both drums



Variable speed control



Handle with deadman brake



Electric start

THE TRENCH SETTER

Our radio-controlled articulated roller, with low and high amplitude vibration guarantees best results.

Profit maximization and low operating costs are achieved by the roller's ECO-mode, maintenance-free articulated joint, fast trouble-shoot with machine diagnostics.



D.ONE

D.ONE

Operating mass	1595 kg	3,516 lb
Basic mass	1585 kg	3,494 lb
Axle load, avg.	798 kg	1,758 lb
Drum width	850 / 610 mm	33.5 / 24.0
Speed 1, forward / reverse	1,2 km/h	0.7 mph
Speed 2, forward / reverse	2,8 km/h	1.8 mph
Centrifugal force, front / rear	72 / 36 kN	16,186 / 8,093 lb
Amplitude, front / rear	1,12 / 0,56 mm	0.044 / 0.022 in
Vibration frequency	42 / 42 Hz	2,520 / 2,520 vpm
Manufacturer, model	Kubota, D 1005	Kubota, D 1005
Emission stage	4 final	4 final
Type	water cooled diesel	water cooled diesel
Fuel consumption	3,1 l/h	0.8 gal/h
Power	14,5 kW	19.4 hp
Drive system	hydrostatic	hydrostatic

MAXIMIZED PRODUCTIVITY

Articulated steering combined with radio controlled remote lets you maneuver the D.ONE with ease to get the job done faster.

Around 1,6 t / 3500 lb, choice of two amplitudes, exciter on both drums – all for one good reason ‘best compaction result’!

To ensure even compaction and level surface, the Automatic Vibration Control feature regulates the travel speed during vibration.

SAFETY

Active Zone System ensures operator safety by halting the machine when the operator is close to the unit.

Interference free technology ensures that the user operates only one roller with his remote control. Unintended operation of any other rollers is prevented ensuring a safe working environment.

SUPER VERSATILITY

In a tight spot? Remove the pad drum extension in minutes to go to a smaller width.

Looking for flexible scrapers for the pad drum ? We have it!

If you don't want to leave any marks, pick the smooth drum option.

MASSIVE SAVINGS!

Kubota engine combined with ECO-mode function offers excellent savings in fuel costs.

Super access to service points and fast diagnostics with an error code display facilitates quick troubleshooting.

Fully enclosed exciter design aimed to maximize the life time.

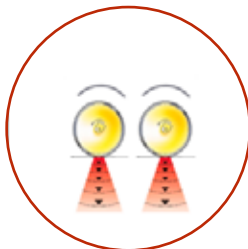
Maintenance-free articulated joint.



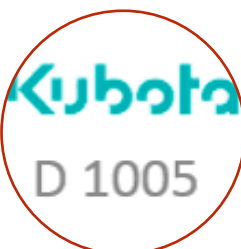
Articulated



Radio remote control



Exciter on both drums



Reliable & economical engine



ECO-mode



Machine diagnostics

STANDARD FEATURES & OPTIONS



RAMMERS

	DR6X	DR7	DR7X
Infinitely variable frequency	•	•	•
Hour and rpm display	•	○	•
Low vibration handle bar	•	•	•
Fuel and air filter system	•	•	•
Self-cleaning air filter housing	•		•
Auto oil level check before start	•	•	•
Engine protection covers	•	•	•
Engine & fuel start/stop on the same switch	•	•	•
Recoil starter	•	•	•
Loading aid rollers on handle	•	•	•
One point lift	•	•	•
Puncture proof transport wheels	○	○	○
Foot widths (160-330 mm)	○	○	○
Foot extensions	○	○	○



FORWARD PLATES

	DFP6	DFP9	DFP7AX	DFP11
Base plate in highly wear resistant material	•	•	•	•
Vibration dampened foldable steering handle	•	•	•	•
Detachable steering handle	•	•	•	•
Automatic shutdown at low oil level	•	•	•	•
V-belt protection cover	•	•	•	•
Recoil starter	•	•	•	•
Carrying handles	•	•	•	•
One point lift	•	•	•	•
Water sprinkler system	○	○	•	○
Transport wheels	○	○		○
Plastic mat	○	○	○	○
Comfort handle	○	○	○	○
Comfort handle, center mount			○	○
Handle, center mount			○	

SERVICE COMMITTED TO YOUR FUTURE

PARTS ONLINE

Technical information:
Parts books
Operating instructions
Service manuals

WARRANTY

Dynapac Plus12
warranty as standard
Extensions possible
w. service
agreement

TRAINING PACKAGES

Know your machine
for best results

KITS

Find repair and
maintenance kits.
Read more at
dynapac.com



REVERSIBLE PLATE

- Wear resistant base plate
- One lever control
- Height adjustable steering rod
- Steering rod lock
- Vibration and throttle regulation on the steering rod
- All around protection hood
- All around protection for V-belt
- Automatic decompression
- Electric starter
- Recoil starter
- Hour meter
- Transport wheels
- Plastic mat

DRP25D



TWIN DRUM ROLLER

- Water sprinkler system
- Infinitely variable speed control
- Vibration and throttle regulation on the steering rod
- Height adjustable and low vibration steering rod
- Back-up drive protection on the steering rod
- Hydrostatic drive
- Mechanical vibration drive with exciter on both drums
- Two scrapers per drum
- Safety control including parking brake
- Automatic shutdown at low oil level
- Electric and crank starter
- One point lift

DTR75



UTILITY ROLLER

- Hydrostatic articulated steering
- Radio/cable remote control
- Active Zone System
- Drum extension (610/850 mm)
- Dual directed-vibration system
- Two travel speed ranges
- Two amplitudes
- Two scrapers per drum
- Automatic vibration control
- ECO-mode
- Automatic shutdown at low oil level
- Automatic engine shut down at a lateral tipping angle of 45°
- Electric starter
- Heavy-duty protection hood
- One point lift
- Special hydraulic oil
- Smooth drum (-45 kg Amplitude 1.59/0.86 mm)
- Portable charger for remote control battery
- Adjustable scrapers 610/850 mm

D.ONE

PREVENTIVE MAINTENANCE PAYS BACK

Equipment needs preventive maintenance that demands

- Timely intervention to avoid expensive breakdowns
- High quality maintenance also means higher resale value (residual value)



Lower Cost of Ownership

Maintenance prevents more costly repairs



Increased equipment reliability

Full equipment uptime



Higher resale value



Available via Dynapac outlets or dealers
www.dynapac.com/contacts



Learn more at
dynapac.com/en/lights-on

Your Partner on the Road Ahead